

ALL FIBRE SQUARE DRUM

From BHARGAVI AUTOMAC

' An Innovative Packaging Machinery Manufacturer '

(Part of Bhargavi Paper Industries LLP, Pune)

An Opportunity For Packaging Material Manufacturers.
An Ideal Packaging Solution for chemical & allied Industry.



Present Packing Style



- Composite materials
 - Paper
 - Wood / Plastic
 - Metal
- Metal part to cut off for disposing.
- Not Environment friendly.
- Not “RESY” standard compliant.
- No hand hole cut-out for easy handling.

Innovation is the Way

- Made out of one material only (no metal part to cut off and hence no rusting)
- Solid, Re-usable,
- 100% Recyclable
- RESY standard compliant,
- With hand hole cut-out for easy handling.



Innovation is the Way

- Cubic efficient for a 50 % reduction of the storage and handling costs.
- Certified for Hazardous goods.
- Can be stacked up to 3 m high.



Innovation is the Way



- Environment friendly,
- Collapsible for easy recycling,
- Easily Disposable.

Innovation is the Way



- Made from 300 GSM Test Liner or Liner Kraft.
- Made on specially designed Convolute Winder. Fully automatic line. Only three persons required to run the plant.
- Can be made up to 7 to 9 layers of Kraft liner. Meets all IMDGA standards.
- Food grade adhesive used.
- Food grade Certified.

Innovation is the Way



- Compression strength: Up to 1000 Kgs
- Puncture resistance: Up to 800 beach units.
- Cobb value < 155
- Stack ability: 3 meters.
- Moisture: 7% to 9%

Innovation is the Way



- Base size: 370 mm X 370 mm.
- Suitable for CP 3 Pallet.
- Pallet size: 1140 mm X 1140 mm
- 3 X 3 configuration on the pallet.
- Minimum drum height: 300 mm.
- Maximum drum height: 1170 mm.
- Required volume for packing adjusted by height.

Innovation is the Way



- Volume range from 25 liters to 150 liters.
- Used for Powder, Paste packing using poly Liner bags.
- Used for liquid packing using specially designed liner with closure.

100 % Pallet Utilization

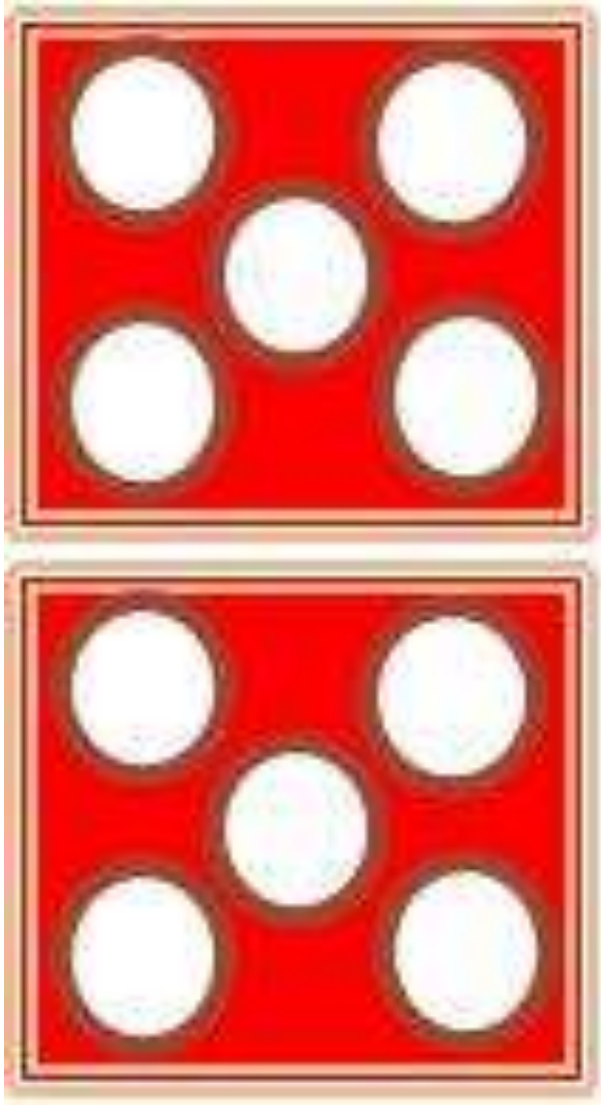


100 % Container Utilization



How can we achieve saving's

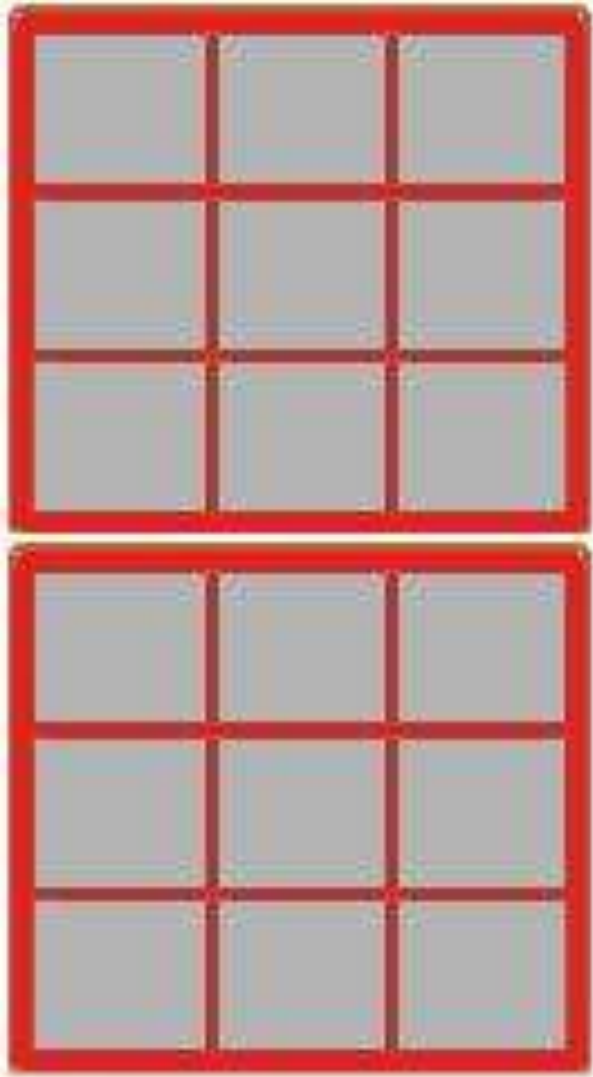
- Consider an example.
- Material to pack is powder having bulk density of 0.35
- To pack net 50 Kgs per drum.
- Round drum size required is 18" diameter and 32" height
- Square drum size required is 370 mm X 370 mm X 970 mm



Round Drum

- No of drums on pallet in one layer is 5
- Pallet size 1140 mm X 1140 mm
- No of pallets per 20 feet container is 20
- Total no of drums in container = $20 \times 5 = 100$ drums
- Weight of material packed in one container = $100 \times 50 \text{ Kgs} = 5000 \text{ Kgs}$.

Square Drum



- No of drums on pallet in one layer is 9
- Pallet size 1140 mm X 1140 mm
- No of pallets per 20 feet container is 20
- Total no of drums in container = $20 \times 9 = 180$ drums
- Weight of material packed in one container = 180×50 Kgs = 9000 Kgs.



Savings

- 4000 Kgs more material loaded in to container.
- 80 % increase in loading
- Possibility of saving 10 pallets as square drums can be easily stacked on each other as shown.



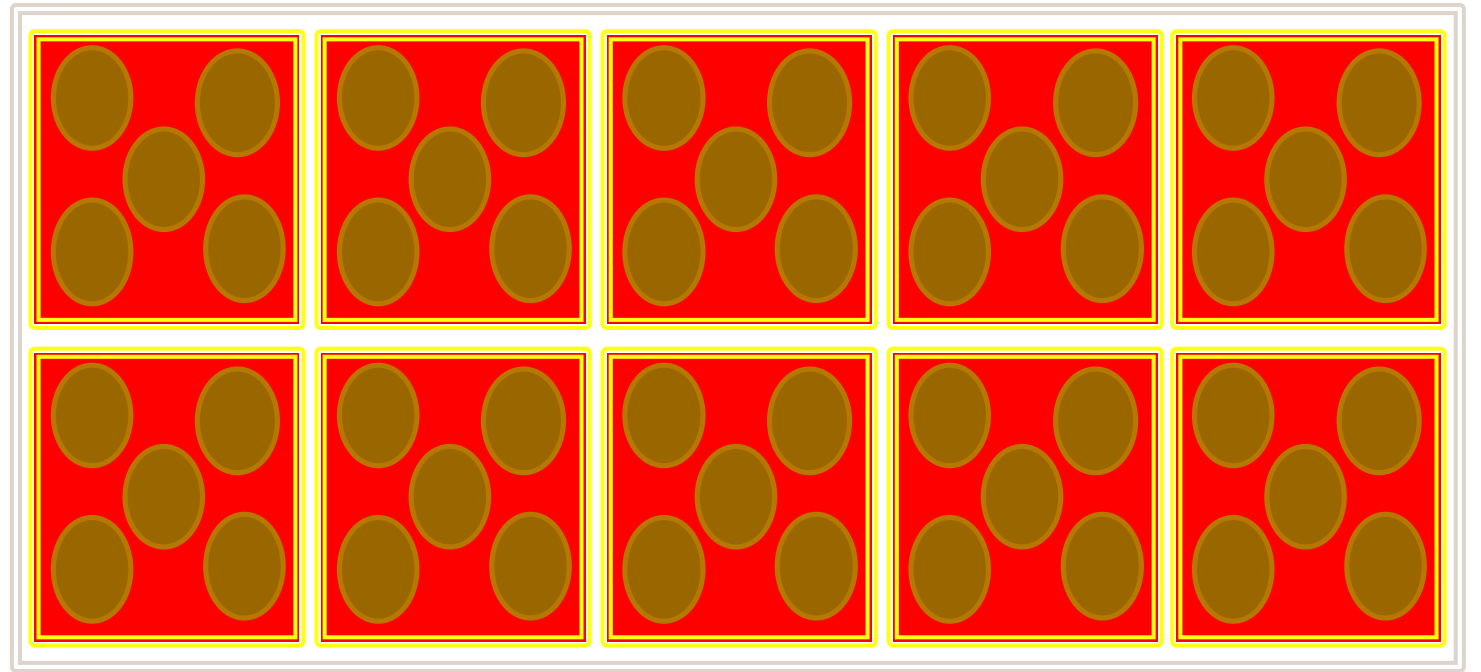
Example of Single pallet

- 4 high stack on single pallet.
- Neat appearance.
- Label can be properly pasted for visibility from all four sides.

Actual container picture showing complete utilization of container space

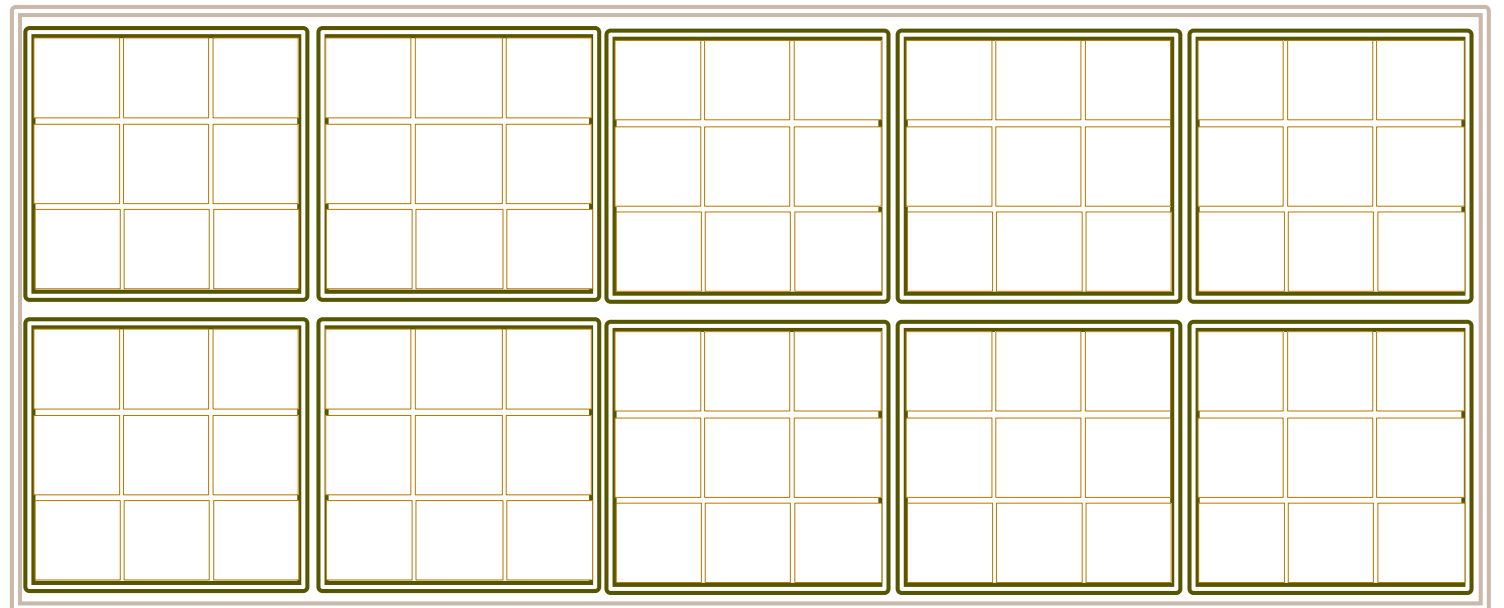


Round Drum →



Container utilization by round and square drums

Square Drum →

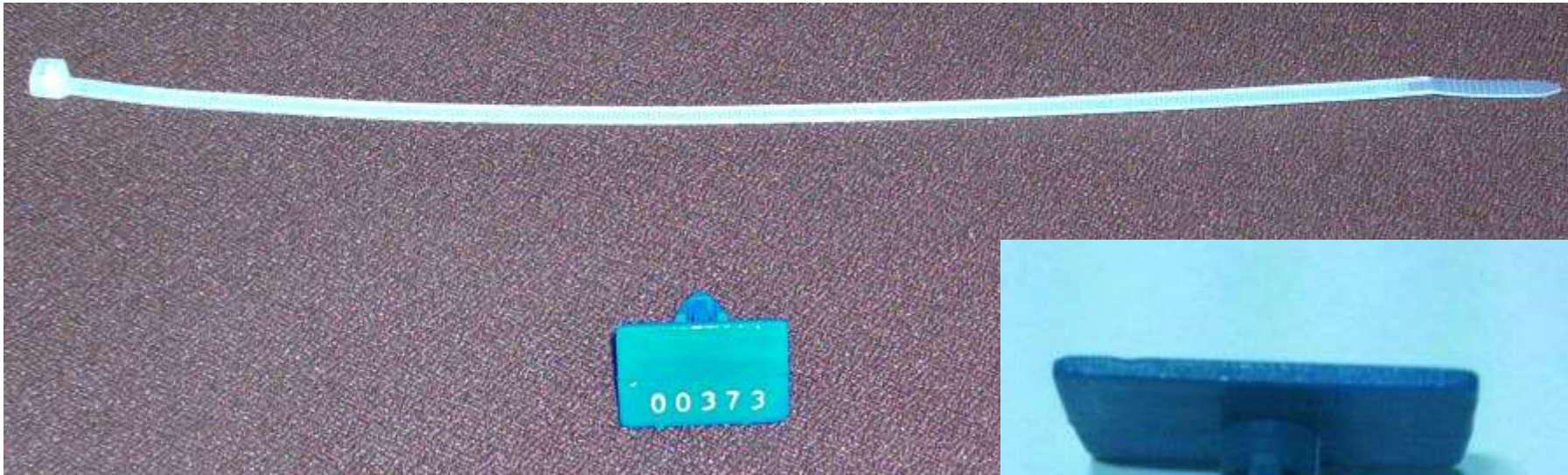


Closure methods



- We can add security seals.
- Tying type.
- Insert type

Security seals



Square Fiber Drum Production Line – Model BA 360 A

Drum (Body)	
Output	Design Speed 100 drums per hour*
Length of Drum	370 mm Outer dimension
Width of Drum	370 mm Outer dimension
Height of Drum	225 mm to 1170 mm
Volume of Drum	25 Liters to 150 Liters
Number of plies	6 to 8 plies
Wall thickness of Drum	3.0 mm to 3.2 mm
Material of construction	Kraft Liner of 250 GSM to 350 GSM
* Depends on Paper quality, Adhesive quality, number of plies and operators' skill	

Square Fiber Drum Production Line – Model BA 360 A

Lid (Cap)	
Output	Design Speed 100 Lids per hour*
Length of Lid	370 mm Outer dimension
Width of Lid	370 mm Outer dimension
Height of Lid	150 mm
Number of plies	6 to 8 plies
Wall thickness of Lid	3.0 mm to 3.2 mm
Material of construction	Kraft Liner of 250 GSM to 350 GSM

Square Fiber Drum Production Line – Model BA 360 A

Bottom Plate	
Length of Bottom Plate	356 mm
Width of Bottom Plate	356 mm
Thickness of Bottom Plate	2.8 to 3 mm
Material of Construction	1900 GSM to 2100 GSM Stiffener board
Top Plate	
Length of Top Plate	360 mm
Width of Top Plate	360 mm
Thickness of Top Plate	0.30 mm to 0.45 mm
Material of Construction	150 Kraft/20 microns poly/150 Kraft
* Depends on Paper quality, Adhesive quality, number of plies and operators' skill	

Contact Details

- Bhargavi Paper Industries LLP. Pune.
 - Address: Gut no 456/2, Gaikwad Wasti, Kurli-Nighoje road, Village: Kurli, Dist: Pune – 410501, Maharashtra, India.
- Contact person:
 - Mr. Ram Kumar Sunkara
 - Mobile: +91 98200 86841, e-mail: ramkumarsunkara@hotmail.com
 - Web site: www.ramkumarsunkara.com
 - Mr. Methil R Sunkara
 - Mobile: +91 90961 13466, e-mail: methilsunkara@gmail.com
 - Mail: bhargavipaperindustries@gmail.com